

RATES FOR CARGO 2026 – CARGO VESSEL
GUERNSEY TO SARK

All rates are based on the ratio of 3.33 cubic meters = 1,000kg

In the event that the dimensions out measure the weight of the goods,
IOSS reserves the right to charge by the cubic metre.

Minimum Charges will apply for each class until the class tonnage threshold is reached. Thereafter the charge will be calculated at fraction of the class tonnage rate unless the minimum charge is greater.

CLASS	1,000KG = 1 Tonne	Tonnage Threshold
1.	£65.46	428kg
2.	£72.73	386kg
3.	£83.12	250kg
4.	Camping Equipment*	305kg
5.	£98.71	287kg
6.	£119.49	283kg
7.	£145.46	194kg
8.	£117.41 (recycling skips priced separately)	N/A

* See Classification of Goods below

Minimum Charges

Weight	Standard Goods	Chilled & Frozen Goods
0 to 5kg	£6.92	£8.26
5.1 to 10kg	£8.05	£9.87
10.1 to 20kg	£10.91	£12.99
20.1 to 30kg	£13.51	£16.10
30.1 to 40kg	£16.10	£19.22
40.1 to 50kg	£18.70	£22.34
50.1 to 60kg	£21.30	£25.46
60.1 to 100kg	£24.42	£28.68
100.1 to 200kg	£27.01	£32.21
200.1 to 999kg	£28.05	£34.81

CLASSIFICATION OF GOODS

Class 1 - £65.46 per 1 Tonne

Including but not limited to; animal feed & building goods (see Annex 1 for details).

Class 2 - £72.73 per 1 Tonne

Lubricating oil in drums.

Class 3 - £83.12 per 1 Tonne

Including but not limited to; Ambient foodstuff, alcohol & soft drinks, general hardware (see Annex 2 for details).

Class 4 - Camping equipment return

This category covers the shipping of camping equipment to and from Sark for a stay in one of the Sark camping sites.

Return:

Under 50kg	£20.78
50 to 100kg	£31.17
100.1kg +	£46.76

Transport of camping equipment to Sark for commercial purposes is category 3.

Class 5 - £98.71 per 1 Tonne

Including but not limited to; agricultural implements, tools, machinery and batteries (see Annex 3 for details).

Class 6 - £119.49 per 1 Tonne

All chilled and frozen goods.

Class 7 - £145.46 per 1 Tonne

Including but not limited to; Household and personal items, non-essentials and electrical goods (see Annex 4 for details).

Class 8 - £117.41 Returning skips*

Skips return journey full.

Skips return journey, empty in both directions

*Other than contracted by Sark Chief Pleas

CLASSIFICATION OF GOODS CONTINUED

Empties & Fuel	Per item, per journey
Barrels/cases/kegs & gas cylinders	£3.01
Coffins: Empty	£34.81
Coffins: Occupied	£150.66
Fuel oil per litre (all methods of carriage)	£0.0743p

Livestock*

Charged in-line with Class 5 for tonnage/cubic capacity of crate or trailer that is used to transport animal(s). No individual charge for animals.

NOTE: *The rate applies for a crate or trailer shipped un-laden in one direction and laden in the other. The date and time of return for the crate or trailer used to transport livestock either to or from Sark will be at the sole discretion of The Isle of Sark Shipping Co. Ltd, and subject to space available or operational constraints.

If there is a requirement to ship the crate or trailer laden in both directions, please contact freight@sarkshipping.gg or telephone 01481 724059 to receive a written quotation.

Special transportation items

Special item	Per item, per journey
Bicycles each, per journey:	
Standard bicycle	£10.39
Electric bicycle	£15.59
Electric cargo bicycle	£20.78
Other special items:	
Mattress (single)	£15.59
Mattress (double)	£31.17
Laundry bag	£10.39

RATES FOR CARGO 2025 ON A PASSENGER VESSEL
(EXCLUDING ACCOMPANIED, PERSONAL BAGGAGE)

Weight	Description	Cost
Small letter envelope/small parcel	e.g. glasses case/small jewellery case	£2.60
Letter envelope/parcel	Up to 17cm along longest edge	£5.20
2.1kg to 5kg	Up to 35cm along longest edge	£10.39
5.1 to 10kg	Up to 50cm along longest edge	£15.59
10.1 to 15kg	Up to 65cm along longest edge	£20.78

The maximum consignment weight for goods carried on our passenger vessels is 15kg.

All goods or consignments of multiple items exceeding 15kg are to be consigned on the cargo vessel sailings.

Any items exceeding the weight or cubic measurement limits for the passenger vessel are carried entirely at the discretion of the Company and may be transferred to the cargo sailing.

INSURANCE OF GOODS

The Isle of Sark Shipping Company accepts no liability for any damage caused to goods shipped on our cargo or passenger vessels. The Company recommends that all cargo/goods are insured privately against damage and/or loss.

See our website for full terms and conditions <https://www.sarkshipping.gg/t-cs>

RATES FOR CONTAINER SHIPMENT 2025
APPLICABLE TO ALL GOODS EXCEPT CHILLED & FROZEN GOODS

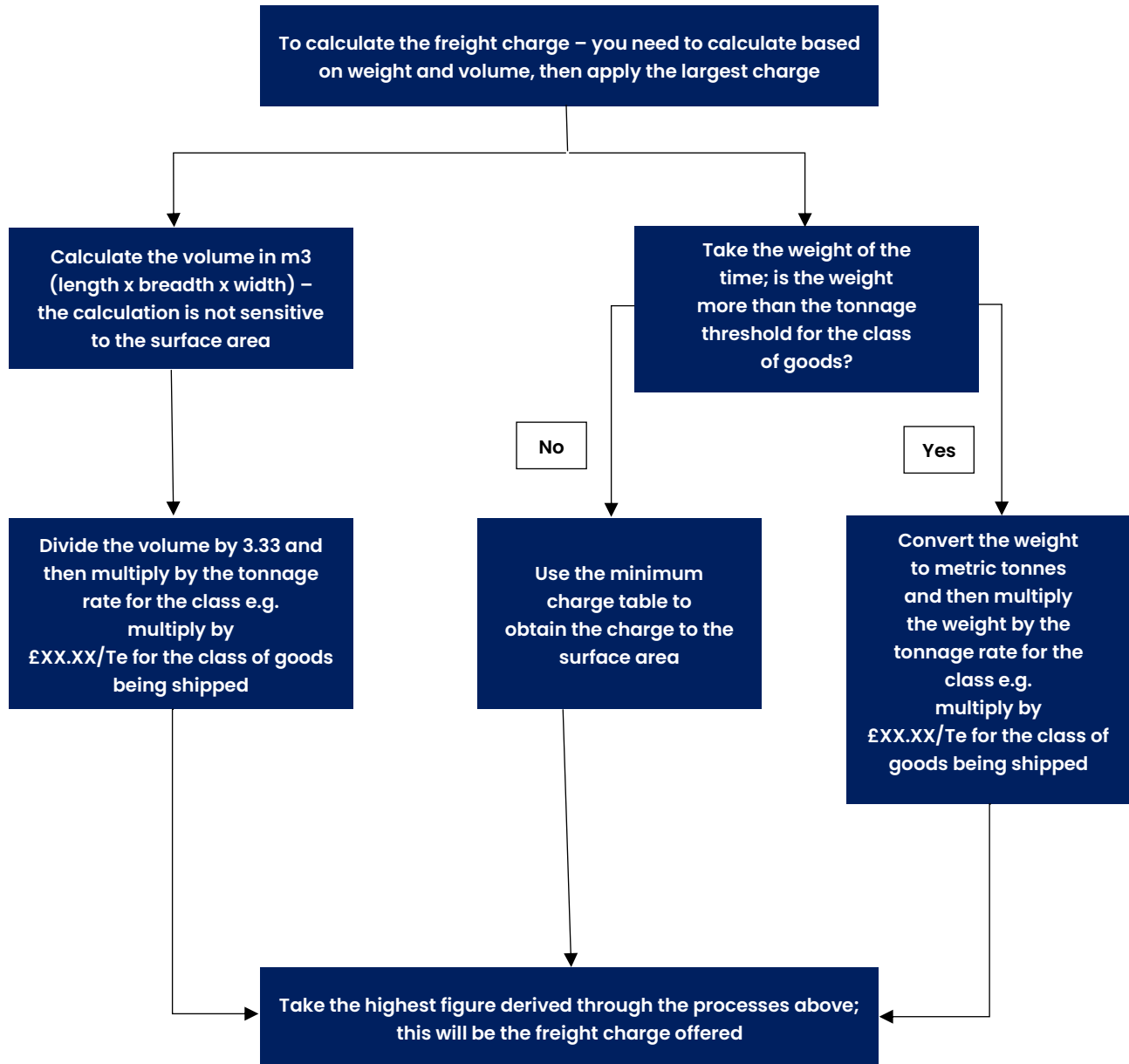
External container size (in feet)	Internal capacity (cubic feet)	Internal Capacity (cubic meters)	Maximum contents weight (tonnes)	Maximum contents weight (kilograms)	Fixed price
7 x 7 x 5	227.4	6.44	2	2,000	£233.78
8 x 8 x 6	406.8	11.52	3	3,000	£358.46
10 x 8 x 8	610.2	17.28	4	4,000	£477.94
20 x 8 x 8	1241	35.14	6	6,000	£976.66

The above return rates are for shipping a container unladen in one direction and laden in the other direction.

If the container is hired from The Isle of Sark Shipping Company Ltd, the above rates are inclusive of up to 24 hours hire of the container. Thereafter an additional charge of £15 per day is made for the hire of the container.

Hire of a container for more than 24 hours must be arranged in advance. Please contact freight@sarkshipping.gg or telephone 01481 724059 to receive a written quotation for the hire and/or shipping of containers and chiller containers.

FREIGHT CHARGES – METHOD OF CALCULATING



ANNEXES

Annex 1 – Class 1

Including but not limited to:

Animal feed	Bricks
Hay & straw	Concrete blocks
Compost/peat	Cement/sand
Fertiliser/lime/manure	Granite blocks
Coal	Plaster
Bulk flour	Siftings

Annex 2 – Class 3

Including but not limited to:

Foodstuff/confectionary	Scaffolding
Beer, Wines, Spirits, Soft Drinks,	Rope
General Hardware e.g. Nails, Screws, Paint Brushes, Hinges, Putty, Grout	Timber, hardware, plasterboard, plywood & other engineered boards
Glass	Turf
Plants/Flowers	Tiles & slates
Metals: Iron, steel lead etc.	Fishing bait
Commercial camping gear	

Annex 3 – Class 5

Including but not limited to:

Agricultural implements	Tractors & trailers
Gardening tools	Carriages
Batteries (not including lithium batteries)	Furniture
Fuel tanks – empty	Lawn mowers
Plant, machinery and spare parts	Tyres

Annex 4 – Class 7

Including but not limited to:

Household & personal items	Non-essentials
Books, magazines & newspapers	Perfumes and toiletries
Stationary	Cosmetics
Carpets	Photography equipment
Catalogue goods	Toys
Catering equipment	Electrical goods (e.g. computer goods, TV's etc.)
Cigarettes & tobacco	Musical instruments
Clothing & shoes	All other goods that do not fall into any other category or consigned as general cargo
Kitchen goods & equipment	

GENERAL NOTES

Quotes for the shipment of goods can be obtained by emailing a full description plus the weight and dimensions of the goods to freight@sarkshipping.gg or by telephoning 01481 724059.

All goods which are shipped between Guernsey & Sark, including unaccompanied luggage, must be accompanied by a fully completed consignment note. Consignment notes can be downloaded from the 'Cargo' page of the Company's website www.sarkshipping.gg/cargo or collected from the Sark and Guernsey ticket offices.

A consignment note which is partially or incorrectly completed, or is not delivered to Isle of Sark Shipping Co Ltd together with the goods being shipped, will incur an administration fee of £5.20. The Shipper is responsible for completion and accuracy of the consignment note and therefore the administration fee will be levied on the Shipper, irrespective of who is paying the freight costs.

If the actual weight and/or dimensions of the goods exceed the weight and/or dimensions shown on the consignment note, then the additional freight charges, together with the administration fee, will be invoiced to the Shipper.